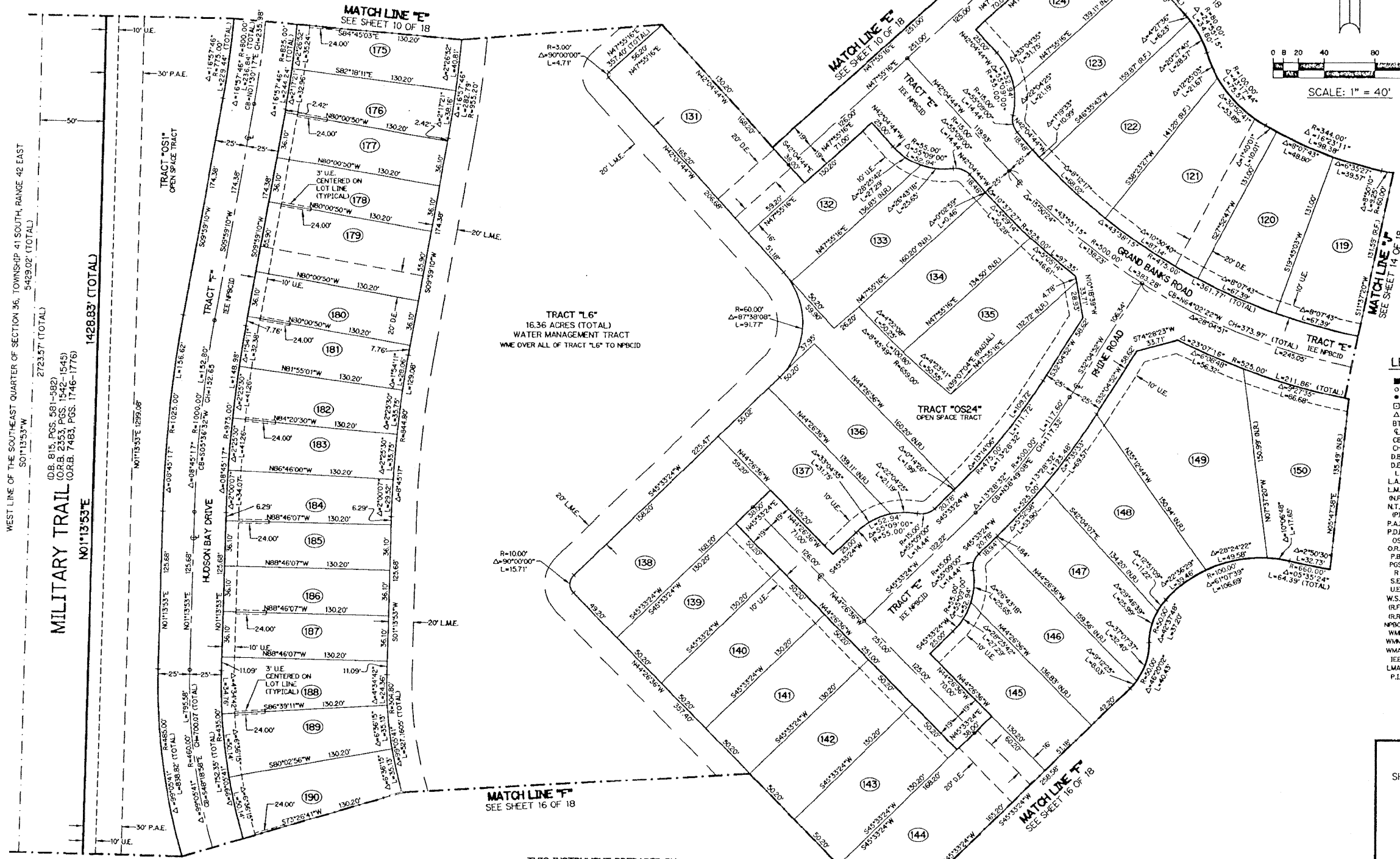
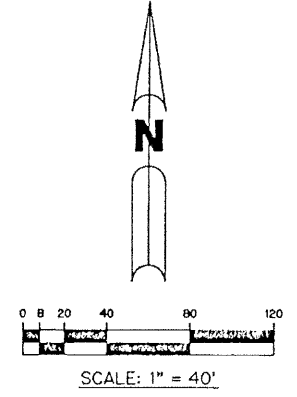


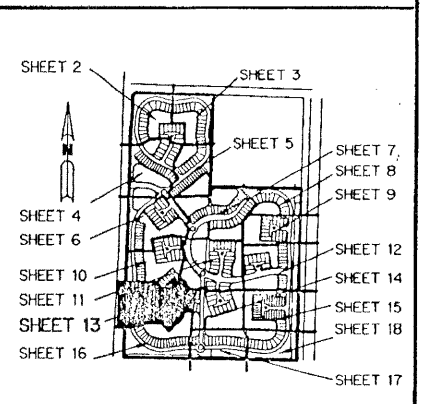
ISLES AT PALM BEACH GARDENS

A PARCEL OF LAND SITUATE IN SECTION 36, TOWNSHIP 41 SOUTH, RANGE 42 EAST
CITY OF PALM BEACH GARDENS, PALM BEACH COUNTY, FLORIDA.
SHEET 13 OF 18 AUGUST, 2001



- LEGEND:**
- - SET PERMANENT REFERENCE MONUMENT NO. L.B. 6674
 - - SET PERMANENT CONTROL POINT NO. L.B. 6674
 - - SET 5/8" IRON ROD WITH CAP NO. L.B. 6674
 - - FOUND PERMANENT REFERENCE MONUMENT
 - Δ - DELTA ANGLE
 - BT - BUFFER TRACT
 - CL - CENTERLINE
 - CB - CHORD BEARING
 - CH - CHORD
 - D.B. - DEED BOOK
 - D.E. - DRAINAGE EASEMENT
 - L - ARC LENGTH
 - L.A.E. - LIMITED ACCESS EASEMENT
 - L.M.E. - LAKE MAINTENANCE EASEMENT
 - (N.R.) - NON-RADIAL
 - N.T.S. - NOT TO SCALE
 - (P) - PLAT DIMENSION
 - P.A.E. - PUBLIC ACCESS EASEMENT
 - P.D.E. - PUBLIC DRAINAGE EASEMENT
 - OS - OPEN SPACE TRACT
 - O.R.B. - OFFICIAL RECORD BOOK
 - P.B. - PLAT BOOK
 - PGS. - PAGES
 - R - RADIUS
 - S.E. - SIDEWALK EASEMENT
 - U.E. - UTILITY EASEMENT
 - W.S.E. - WATER AND SEWER EASEMENT
 - (R.F.) - RADIAL TO FRONT
 - (R.R.) - RADIAL TO REAR
 - NPBCID - NORTHERN PALM BEACH COUNTY IMPROVEMENT DISTRICT
 - W.M.E. - WATER MANAGEMENT EASEMENT
 - W.M.A.E. - WATER MANAGEMENT MAINTENANCE EASEMENT
 - W.M.A.E. - WATER MANAGEMENT ACCESS EASEMENT
 - I.E. - INGRESS EGRESS EASEMENT
 - L.M.A.E. - LAKE MAINTENANCE ACCESS EASEMENT
 - P.I. - POINT OF INTERSECTION

KEY MAP



NOTE:
 COORDINATES SHOWN ARE GRID COORDINATES
 DATUM = NAD 83 (1990 ADJUSTMENT)
 ZONE = FLORIDA EAST ZONE
 LINEAR UNIT = U.S. SURVEY FEET
 COORDINATE SYSTEM 1983 STATE PLANE
 TRANSVERSE MERCATOR PROJECTION
 ALL DISTANCES ARE GROUND
 SCALE FACTOR = 1.0000397
 SBM 41°11'E (PLAT BEARING)
 SBM 41°11'E (GRID BEARING)
 ZERO ROTATION PLAT TO GRID

THIS INSTRUMENT PREPARED BY
 WILBUR DIVINE, P.S.M. 4190, STATE OF FLORIDA
 LAWSON, NOBLE AND WEBB, INC.
 ENGINEERS, PLANNERS, SURVEYORS
 WEST PALM BEACH, FLORIDA
 LB 6674

G:\DATA\300-399\A372\CAD\A372EPL13.dwg 08/29/2001 04:13:01 PM EDT